



SARRAH

Services for Australian
Rural and Remote Allied Health

Media Release

8 August 2023

Allied health national conference in Perth - A chance to connect

Yesterday, the Western Australia Minister for Health, the Hon, Amber-Jane Sanderson hosted a WA Health Workforce Summit to facilitate input to a 10-year workforce strategy aimed at growing the WA health workforce, amid global workforce challenges. The focus of the Summit was on attracting doctors and nurses into WA's health system.

There are also plans for other roundtable discussions to consider areas of high need, such as allied health, primary health, Aboriginal health, paediatrics and mental health.

Contemporary health systems need capacity across all these areas, with practitioners in every profession working collaboratively, and for systems to connect better around the care a person needs. This approach enables the best possible care to be available for people in Western Australia and elsewhere when and where they need it. These issues are being explored at the [15th National Allied Health Conference](#), coincidentally being held in Perth this week, 7-9 August.

The Conference is looking at practical ways to improve the care people receive, in areas such as hospital discharge, enabling skilled professionals to work to their full scope of practice, improving acute care services, through innovative and effective models of care, paediatrics and growing and supporting the vital health workforce.

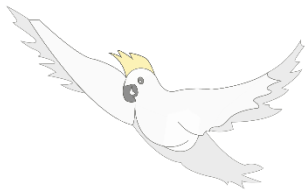
SARRAH acknowledges and thanks the **Western Australia Government, Department of Health** as the key meeting partner for this important national conference.

People living in rural and remote WA communities should enjoy access to services that enable them to enjoy comparable health and wellbeing to that of people living in our major cities. They do not. Without enough skilled health and care professionals our public, private and community services cannot deliver the allied health or other care people need: in public or private health, aged care, disability services, early childhood development, veterans' services, workers compensation and rehabilitation or other settings.

“Providers are under pressure across the board. Many can't find the workforce they need to deliver services”, said Cath Maloney, SARRAH CEO. “Competition is intense nationally and internationally. With providers bidding for the same workforce, too often it's rural and remote communities that miss out. But, when allied health services are available it means having highly skilled health professionals help someone who's had a stroke to move and speak again, or deal with stress and isolation. It helps you recover from an accident, keep or regain work, pay the bills and mortgage, and get on with life. It can mean a young child with developmental needs gets the help they need to set them on a better pathway for life. It can help prevent disease developing or managing it better so you can stay independent. Allied health matters at every age. People living in rural and remote communities, in WA or elsewhere in Australia, deserve this as much as anyone else.”

Services for Australian Rural and Remote Allied Health

ABN 92 088 913 517 | T: 1800 338 061 | sarrah@sarrah.org.au | www.sarrah.org.au
Level 2, 53 Blackall Street, Barton ACT 2600



SARRAH

Services for Australian
Rural and Remote Allied Health

Media Release

8 August 2023

The National Allied Health Conference brings together many of the local and national stakeholders who would welcome the chance to support the WA Government's 10-year workforce strategy.

Don't forget to visit the SARRAH booth at the Conference.

**Please direct interviews and media enquiries to: Catherine Maloney
Chief Executive Officer**

Services for Australian Rural and Remote Allied Health

catherine@sarrah.org.au 0491 209 291

SARRAH is the peak body representing rural and remote allied health professionals (AHPs) working in public, private and/or community settings. SARRAH advocates on behalf of rural and remote Australian communities. SARRAH maintains that every Australian should have access to health services wherever they live, and the allied health services are fundamental to the well-being of all Australians.

<https://www.sarrah.org.au/>

Services for Australian Rural and Remote Allied Health

ABN 92 088 913 517 | T: 1800 338 061 | sarrah@sarrah.org.au | www.sarrah.org.au
Level 2, 53 Blackall Street, Barton ACT 2600